

Pickering Legacy ID Selector Tool GUI

User Manual

Document Revision	Tool Version	Date
1.0.3.1	1.6.0.0	06/11/2025
1.0.3.0	1.4.0.0	04/09/2025
1.0.2.1	1.3.0.0	06/08/2025
1.0.2.0	1.2.0.0	12/06/2025
1.0.1.0	1.1.0.1	14/04/2025
1.0.0.0	1.1.0.1	03/04/2025

1. Page Index

Contents

1. Page Index	2
2. Introduction.....	3
2.1. Why do we need this tool?.....	3
2.2. How does it work?.....	3
2.3. Minimum software requirements.....	4
2.4. Support	4
3. How to use the Selector Tool	4
3.1. Welcome Screen	4
3.2. Discovery Settings	5
3.3. Select Instrument	6
3.4. Select Alias	7
3.5. View Existing Aliases	7
3.6. End Screen	8
3.7. Results Examples	9
4. Help	11
4.1. Supported Cards	11
4.2. Additional Support.....	11
4.3. ‘Alias not supported!’ Pop-up.	11
4.4. ‘Model not found!’ Pop-up.....	12

2. Introduction

Welcome to Pickering Legacy ID Selector Tool GUI User Manual.

This guide will help you effectively use the tool to assign a Legacy model to your Pickering Card. Within the document you will find instructions how to use tool, what are the software requirements, and known issues that might occur.

2.1. Why do we need this tool?

Pickering always make sure that our product range is not affected by component obsolescence and other factors, so our customers are supported for a long period of time.

While we update a product to handle component obsolescence, we need to update the product model number with a model suffix to distinguish the new product in the field. For example, 40-635-001 is upgraded to 40-635A-001.

Even though the model number is upgraded, other important factors of the product like functionality of the product, the front panel pin out is not affected.

Pickering Legacy ID Selector Tool GUI provides the next level of support to the customer so that even if customer needs to buy the upgraded product as part of their test setup maintenance, their well-defined and tested Test software application doesn't need to change.

Example Scenario –

In the test software application, customer is specifically looking for the model number 40-635-001 with its serial number before the test application starts.

But after 10 years, the PXI card 40-635-001 needs to be replaced as part of maintenance schedule. And at this point, due to component obsolescence Pickering had to update the product to 40-635A-001.

If 40-635A-001 is used in the Test setup, the software application that is looking for a specific model number “40-635-001” will not work.

And this is where Pickering Legacy ID Selector Tool GUI helps the customer,

Using this tool even though 40-635A-001 is added to the test setup, the tool allows 40-635A-001 to be configured to appear as its predecessor product “40-635-001” in Pickering driver API function calls, which allows the customer application to run without any failures.

2.2. How does it work?

The Pickering Legacy ID Selector Tool GUI reads a defined database with Pickering cards and their predecessor models. The database provides possible choices of Legacy ID aliases and then uses them to generate a file with chosen alias. The driver then reads the generated alias file to return aliased Legacy ID, serial number and revision without affecting any of the card's functionality.

2.3. Minimum software requirements

The minimum software requirements for this product are:

For PXI based test systems:

- Windows machine.
- .NET Framework 4.5.
- Minimum Pickering PXI driver version 5.20.

For LXI based test systems:

LXI chassis with Firmware revision 6.X.X

- o Windows machine.
- o .NET Framework 4.5.
- o Minimum LXI firmware revision 6.4.8.

LXI chassis with Firmware revision 5.X.X

- o Windows machine.
- o .NET Framework 4.5.
- o Minimum LXI firmware version 5.26.0.

2.4. Support

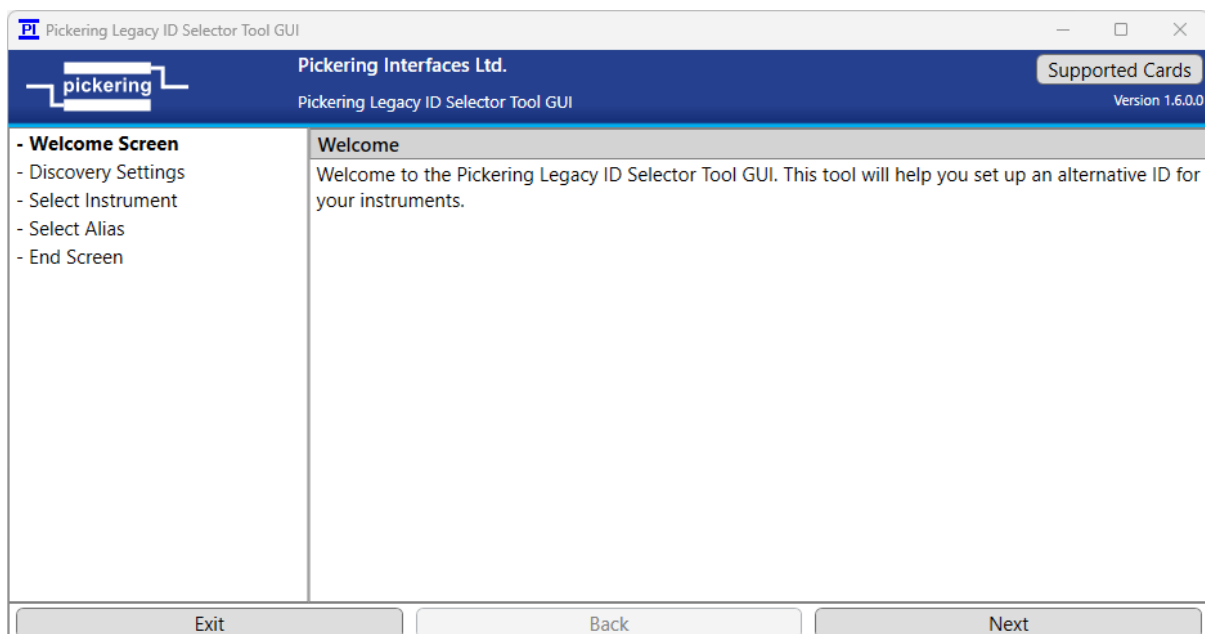
For any issues with the tool, you can contact support at support@pickeringtest.com.

3. How to use the Selector Tool

The tool itself was made in a form that resembles a Wizard style installer to make it easier to use. The pages are described in following sections.

3.1. Welcome Screen

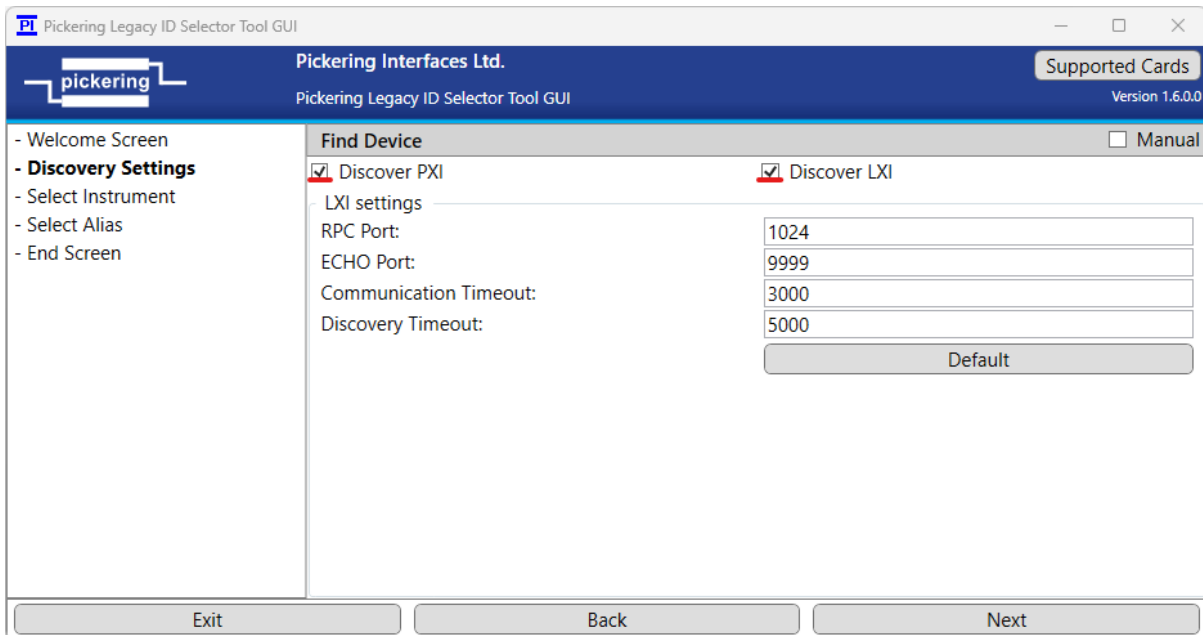
Welcome Screen is the first page that you will see. It says what the tool is and what does it do.



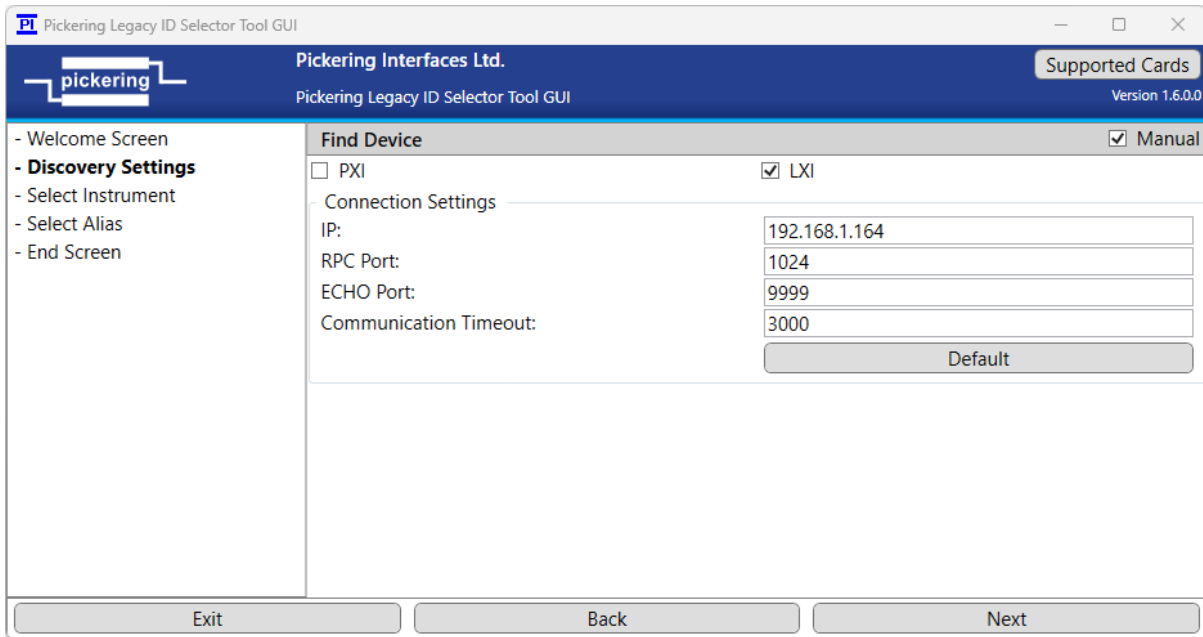
3.2. Discovery Settings

After pressing next, you will enter discovery settings. This will help you find your Pickering card from either PXI or LXI chassis. By default, 'Discover PXI' and 'Discover LXI' are ticked, and they will make the tool look for the cards in the PXI and LXI chassis on the network. You can narrow down the discovery by unticking their respective tick boxes or you can narrow down even further by selecting 'Manual'.

The LXI discovery needs to have network ports and timeouts specified. The default values are: RPC Port = 1024, Echo Port = 9999, Communication Timeout = 3000(ms), and Discovery Timeout = 5000(ms).



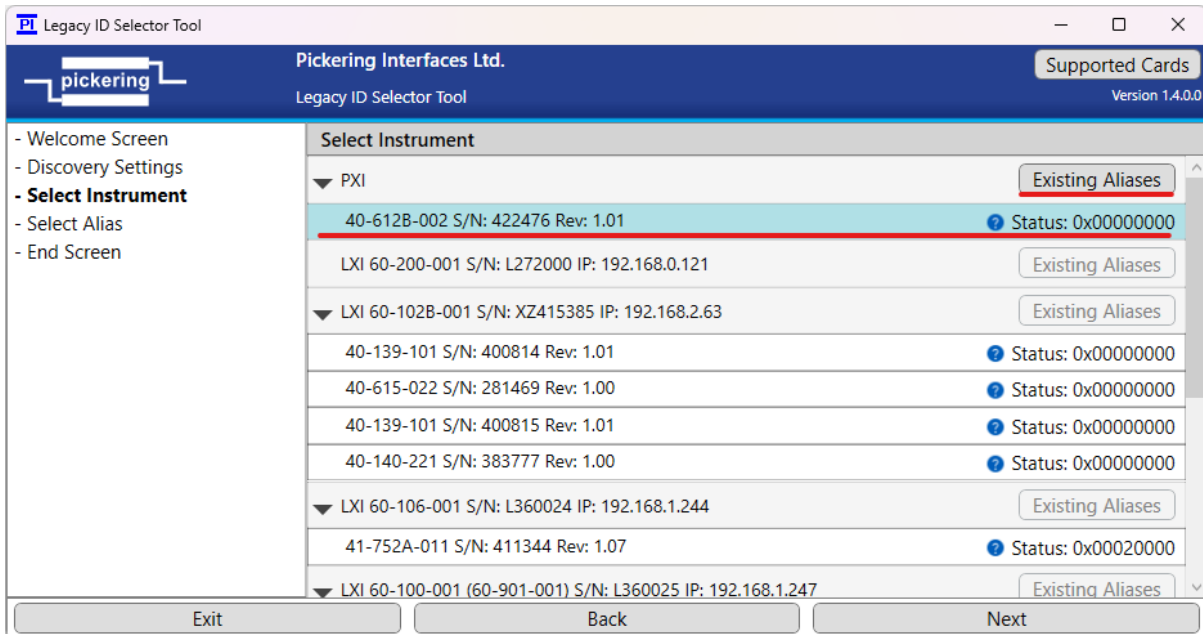
When 'Manual' is selected you can choose whether to connect to PXI chassis or to connect to LXI chassis by specifying connection parameters: IP Address, RPC port, Echo Port, and Communication timeout. When 'PXI' is selected, the 'Connection Setting' group box will be disabled as it is not needed.



When you are happy with your settings, press next to go to the next page.

3.3. Select Instrument

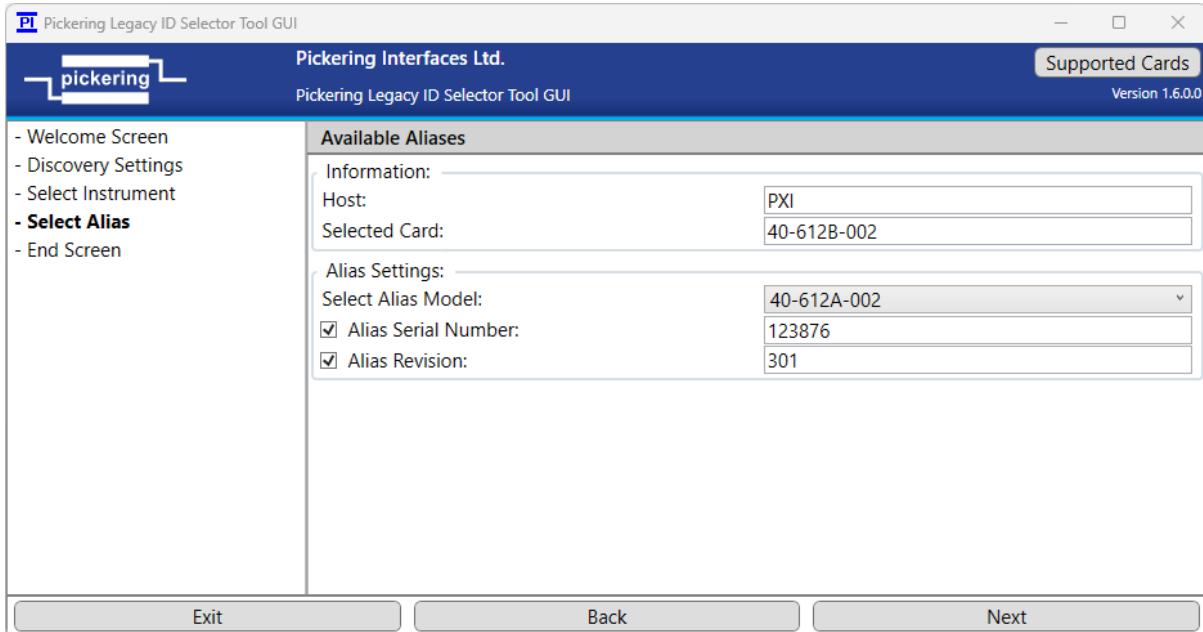
After a brief delay, you will see a tree view with all detected chassis and cards. From there you can select the card you wish to assign legacy ID to. Once selected, press ‘Next’.



If there were any previous Legacy IDs, you can view them by pressing “Existing Aliases” (more in section 3.5 View Existing Aliases).

3.4. Select Alias

At this stage, you will need to select the Legacy ID which you can choose from the combo box. You also have an option to alias serial number and revision by ticking their respective tick boxes. Make sure to provide values in their text boxes or application won't let you continue. Once you are happy with the Legacy alias, press next to enter End Screen.



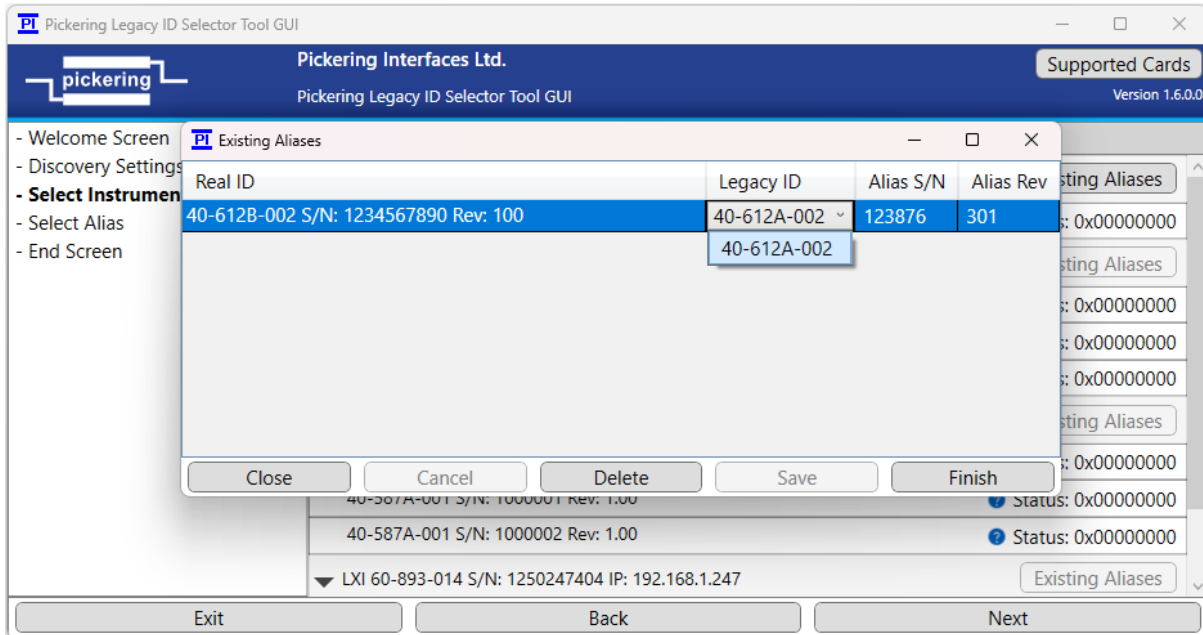
The screenshot shows the 'Available Aliases' screen of the Pickering Legacy ID Selector Tool GUI. The window title is 'Pickering Legacy ID Selector Tool GUI'. The header includes the Pickering logo, 'Pickering Interfaces Ltd.', and 'Pickering Legacy ID Selector Tool GUI'. A 'Supported Cards' button and 'Version 1.6.0.0' are also visible. On the left, a navigation menu lists: '- Welcome Screen', '- Discovery Settings', '- Select Instrument', '- **Select Alias**', and '- End Screen'. The main area is titled 'Available Aliases' and contains two sections: 'Information:' and 'Alias Settings:'. The 'Information:' section has 'Host:' (PXI) and 'Selected Card:' (40-612B-002). The 'Alias Settings:' section has 'Select Alias Model:' (40-612A-002), 'Alias Serial Number:' (checked, 123876), and 'Alias Revision:' (checked, 301). At the bottom, there are 'Exit', 'Back', and 'Next' buttons.

3.5. View Existing Aliases

You also have an ability to view any currently assigned Legacy IDs by clicking 'Existing Aliases' button. This will open a window with couple of extra features. From there you will have an option to edit any existing aliases – you can make changes to selected Legacy ID, Serial Number, and Revision.

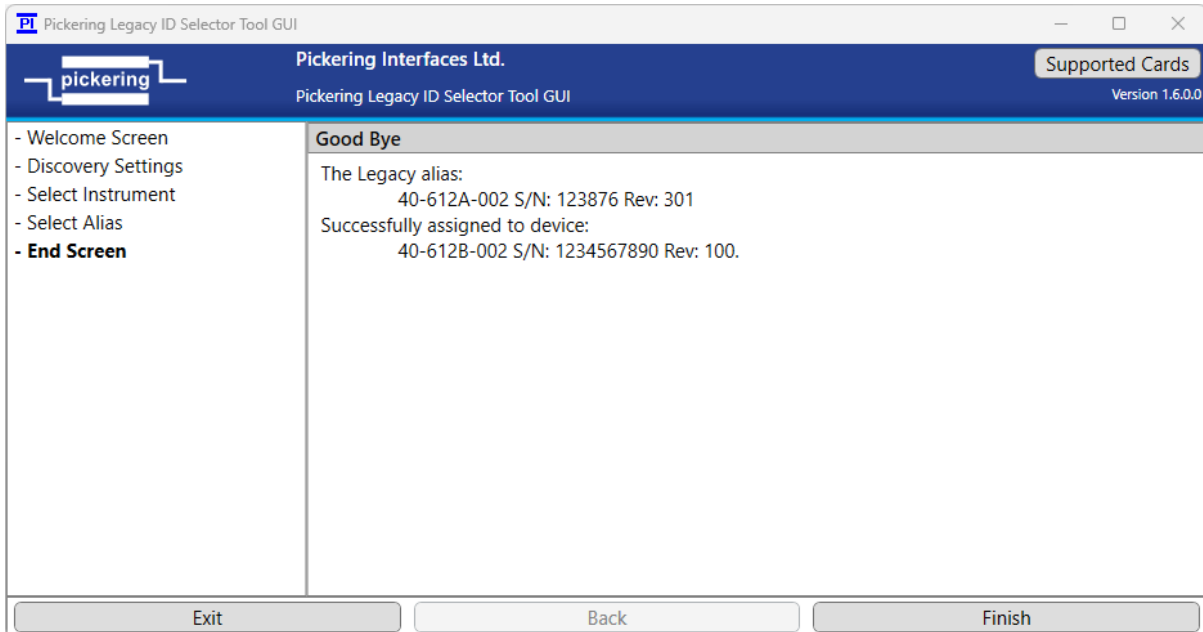
The 'Save' button will only make changes to seen Legacy IDs and it will not write a new one. For that you would have to close the window after saving and continuing with application as normal.

The 'Finish' button will complete application and skip to the end and, you will be prompted if any changes were detected.



3.6. End Screen

The End Screen is the final stage of the Pickering Legacy ID Selector Tool GUI where you can do final validation of your Alias.

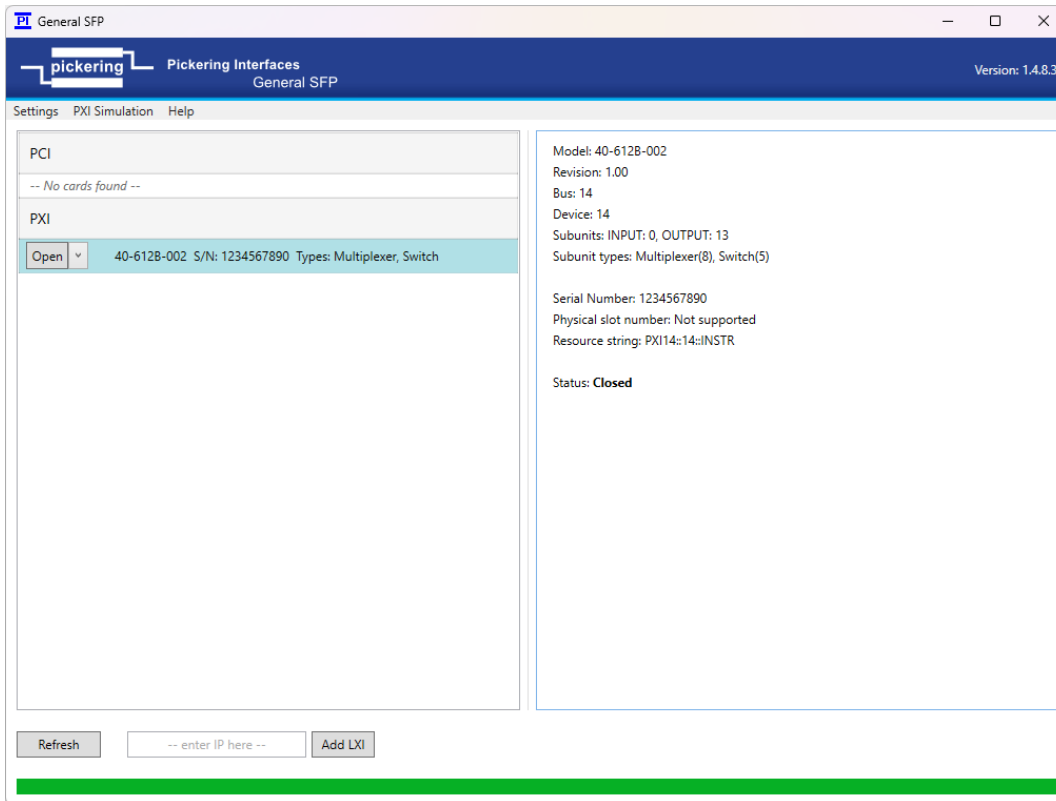


From now on, any tool that utilizes Pickering driver will read card ID as the Legacy one. Please note that **LXI** chassis might require a **reboot** for changes to take effect.

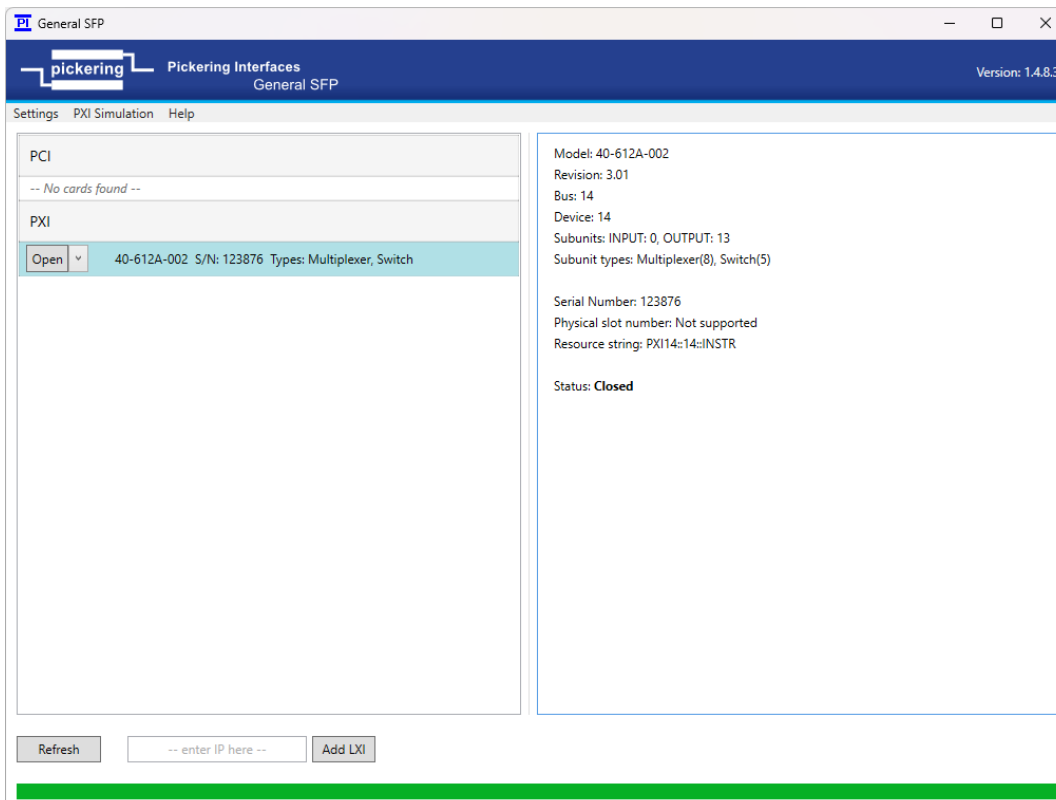
3.7. Results Examples

For example:

GSFP Before:



GSFP After:



PILMon Before:

```
PXI Monitor Program (PILMor x + v - □ x)
=====
Monitor Program for Pickering Interfaces PXI Cards
=====
Version: 2.26 (Build: Oct 9 2025 11:50:40)
(c) Pickering Interfaces Ltd.
PILPXI Driver version number = 528

Number of Pickering cards opened = 1
Selected card 1, sub-unit 1: Input = none, Output = MUX(8)
Enter 'HE' for help.

ls
Card 1:
  Location = bus 14, slot 14
  ID string = 40-612B-002,1234567890,1.00
  Input sub-units: none
  Output sub-units: 1 = MUX(8); 2 = MUX(8); 3 = MUX(8); 4 = MUX(8); 5 = MUX(8); 6 = MUX(8); 7 = MUX(8); 8 = MUX(8); 9 =
SWITCH(8); 10 = SWITCH(8); 11 = SWITCH(8); 12 = SWITCH(8); 13 = SWITCH(8)
  Status = 0x00000000
|
```

PILMon After:

```
PXI Monitor Program (PILMor x + v - □ x)
=====
Monitor Program for Pickering Interfaces PXI Cards
=====
Version: 2.26 (Build: Oct 9 2025 11:50:40)
(c) Pickering Interfaces Ltd.
PILPXI Driver version number = 528

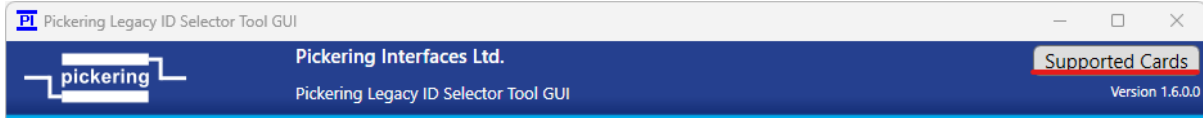
Number of Pickering cards opened = 1
Selected card 1, sub-unit 1: Input = none, Output = MUX(8)
Enter 'HE' for help.

ls
Card 1:
  Location = bus 14, slot 14
  ID string = 40-612A-002,123876,3.01
  Input sub-units: none
  Output sub-units: 1 = MUX(8); 2 = MUX(8); 3 = MUX(8); 4 = MUX(8); 5 = MUX(8); 6 = MUX(8); 7 = MUX(8); 8 = MUX(8); 9 =
SWITCH(8); 10 = SWITCH(8); 11 = SWITCH(8); 12 = SWITCH(8); 13 = SWITCH(8)
  Status = 0x00000000
|
```

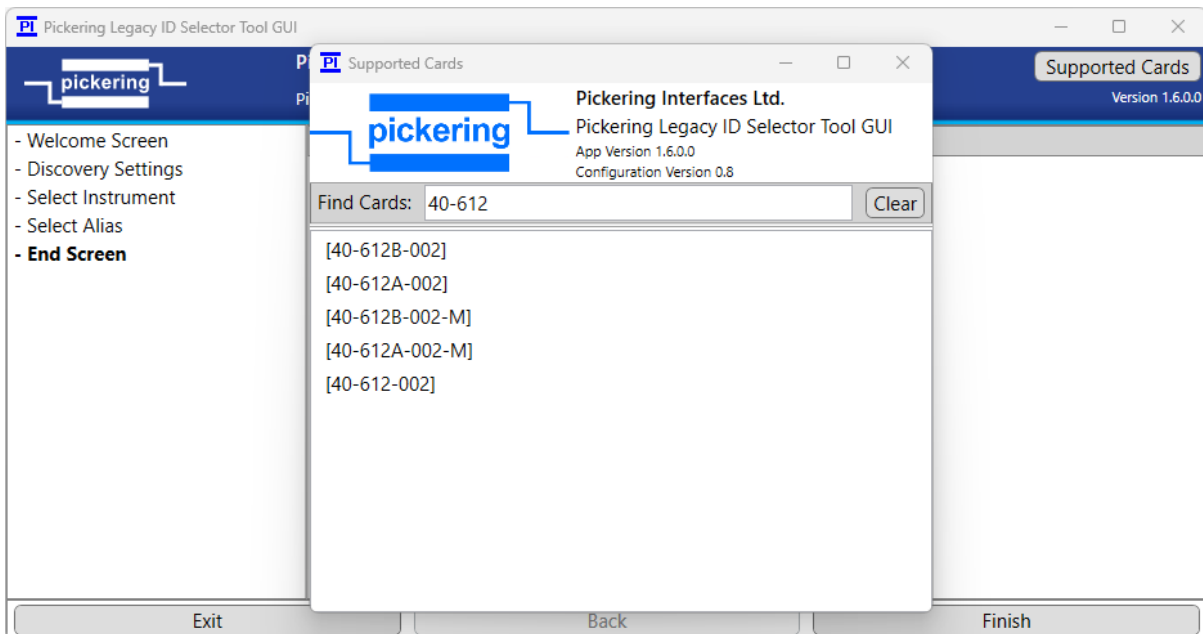
4. Help

4.1. Supported Cards

At any stage of using the application, you can open a window which will show supported cards by clicking “Supported Cards” button:



Within the window, you can view all cards currently supported by Pickering Legacy ID Selector Tool GUI. You can narrow down the list of cards using “Find Cards” text box. Use “Clear” button to clear the text box.

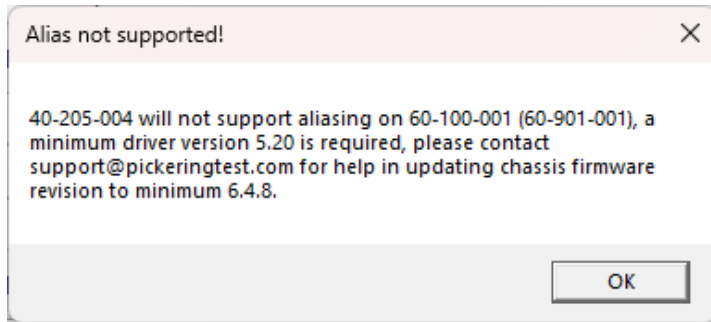


4.2. Additional Support

You can contact Pickering at support@pickeringtest.com for any issues that you have encountered with Pickering Legacy ID Selector Tool GUI.

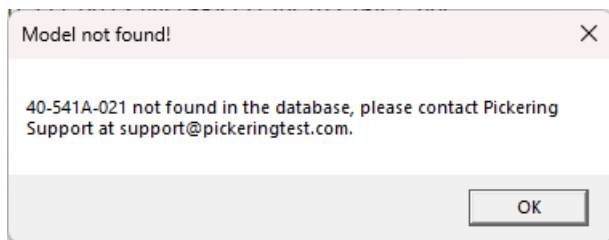
4.3. ‘Alias not supported!’ Pop-up.

You will see this pop-up if you try to use the tool on a chassis which utilizes Pickering driver version that doesn’t support Legacy ID Aliasing. For PXI chassis, it is as simple as downloading the latest driver (minimum v5.20). For LXI, you will have to contact support@pickeringtest.com for information how to update your chassis.



4.4. 'Model not found!' Pop-up

You will see this pop-up if you select a card that does not have defined possible Legacy IDs.



The latest LegacyID.ini can be downloaded from:

<https://downloads.pickeringtest.info/downloads/LegacyIDSelector/>. Simply download LegacyID.ini and drag and drop it on application window. You will be informed if it has been successfully updated:

